

DIRECTIONS FOR USE**RESTRAINTS**

DO NOT apply bait to bare ground (including fallow where there is no vegetative cover).

DO NOT apply bait in a trail.

DO NOT apply bait if heavy rain is imminent.

DO NOT apply to the outer 50m of crop or within 50m of native vegetation. A 50m buffer zone in crop must be employed to reduce risk to birds and other non-target animals.

DO NOT apply bait unless monitoring of mouse numbers indicate the potential for crop damage of economic significance.

Situation	Pests	Rate	Critical Comments
Grain crops, Legume crops, Canola, Safflower, Nut crops and Pasture. (Note: for all situations only as a post emergent treatment, stubble of harvested crop prior to sowing seed, or when seed have been sown into crop stubble or other similar ground cover).	Mice	1 kg/ha to achieve an even coverage of 2-3 grains/m ²	Bait is only to be applied by aerial application or accurately calibrated ground application equipment to achieve 2-3 grains/m ² . It is imperative that all attempts are made to apply bait as evenly as possible to maximise product efficacy and minimise risks to non-target animals. Imtrade DeadMouse Zinc Phosphide Bait will provide a high level of control in most situations. However, in areas of extremely high mice densities or areas with significant amounts of alternative feed, sufficient mice may remain to cause damage to crops after treatment. Re-treatment after 14 days may therefore be required in certain circumstances. It is recommended that pre-treatment estimations of the severity of the mouse problem are performed before applying bait and that post-baiting estimates are conducted to assess the effectiveness of the control operation. For information on the most effective methods for monitoring of mouse populations please contact the government department in your state responsible for vertebrate pest control. Bait may retain activity for several days after light rain or in damp conditions, and light showers can be tolerated. Maximum performance will however be expected under dry conditions.

NOT TO BE USED FOR ANY PURPOSE, OR IN ANY MANNER, CONTRARY TO THIS LABEL UNLESS AUTHORISED UNDER APPROPRIATE LEGISLATION.

THIS PRODUCT IS TOO HAZARDOUS FOR USE IN THE HOME GARDEN.

DO NOT USE THIS PRODUCT IN THE HOME GARDEN.

WITHHOLDING PERIOD

DO NOT harvest any crops or allow livestock to graze baited areas for 14 days after application.

PROTECTION OF WILDLIFE, LIVESTOCK AND THE ENVIRONMENT

Bait should be distributed to minimise exposure to non-target wildlife, especially birds and livestock. It is preferable to place baits late in the day when birds have finished feeding. Particular care should be taken when baits are applied near native vegetation using aircraft as high bait concentrations may occur on the ground beneath aircraft that need to climb steeply. Spilt bait must be collected immediately and applied according to label directions or buried below one metre.

DANGEROUS POISON

KEEP OUT OF REACH OF CHILDREN
READ SAFETY DIRECTIONS BEFORE OPENING OR USING



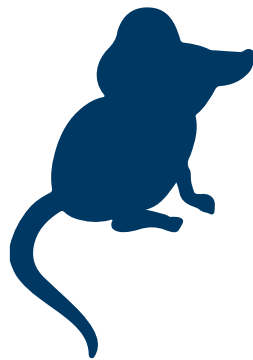
IMTRADE DEADMOUSE ZINC PHOSPHIDE BAIT

ACTIVE CONSTITUENT: 25 g/kg ZINC PHOSPHIDE

**For the control of heavy infestations
of mice in agricultural situations.**

**THIS PRODUCT IS NOT TO BE
AVAILABLE EXCEPT TO PERSONS
AUTHORISED OR LICENSED UNDER
THE RELEVANT STATE OR TERRITORY
POISONS CONTROLS FOR
SCHEDULE 7 POISONS.**

**IMPORTANT: READ THIS LABEL
THOROUGHLY BEFORE OPENING
OR USING THIS PRODUCT**



**NET CONTENTS:
1kg-500kg**

Imtrade Australia Pty Ltd
ACN 13 090 151 134
17 Ocean Street, Kwinana WA 6167
Tel: 1800 171 799 Fax: 1800 171 788
Web: www.imtrade.com.au

STORAGE AND DISPOSAL

The contents of each container should be used within 3 months of opening. Store in the closed original container in a dry, cool, well-ventilated area out of direct sunlight. Store in a locked room away from children, animals, food, feedstuffs, seed and fertilisers. Store away from acids, water and any sources of heat or ignition.

Dispose of used containers by crushing and deliver empty packaging for appropriate disposal to an approved waste management facility. If an approved waste management facility is not available, bury the empty packaging one meter below the surface in a disposal pit specifically marked and set up for this purpose clear of waterways, desirable vegetation and tree roots, in compliance with relevant local, State or Territory government regulations. Excess or unused baits must be buried below one metre. Empty containers and product must **NOT** be burnt.

SAFETY DIRECTIONS

Poisonous if swallowed. Releases dangerous phosphine gas slowly in moist air and immediately if wet. **DO NOT** inhale vapour. Avoid contact with eyes and skin. Keep away from water and liquids. Keep away from naked flames forms toxic gas. When opening the container and using baits, wear elbow-length PVC gloves and a full face respirator with combined dust and gas cartridge or supplied air respirator. Wash hands after use. After each days use wash gloves and respirator and if rubber wash with detergent and warm water.

FIRST AID

If poisoning occurs, contact a doctor or Poisons Information Centre (Phone Australia 13 11 26). **DO NOT** give direct mouth-to-mouth resuscitation if swallowed. To protect rescuer, use airviva, oxy-viva or one-way mask. Resuscitate in a well-ventilated area.

Additional GHS Hazard & Precautionary Statements

• In contact with water releases flammable gases which may ignite spontaneously; • Very toxic to aquatic life with long lasting effects; • **DO NOT** eat, drink or smoke when using this product; • **IF SWALLOWED:** Rinse mouth. **DO NOT** induce vomiting; • If exposed or if you feel unwell: Call a POISON CENTER or doctor/physician; • Collect spillage; • Not combustible. Use extinguishing media suited to burning materials (NOT WATER).

SAFETY DATA SHEET

Additional information is listed in the Safety Data Sheet, which can be obtained from your supplier or Imtrade Australia Pty Ltd website www.imtrade.com.au

CONDITIONS OF SALE

Imtrade Australia Pty Ltd shall not be liable for any loss, injury, damage or death whether consequential or otherwise whatsoever or howsoever arising whether through negligence or otherwise in connection with the sale supply use or application of this product. The supply of this product is on the express condition that the purchaser does not rely on Imtrade's skill or judgment in purchasing or using the same and every person dealing with this product does so at his own risk absolutely. No representative of Imtrade Australia Pty Ltd has any authority to add to or alter these conditions.

**In a Transport Emergency
Dial 000
Police or Fire Brigade**

APVMA Approval No: 66642/115468

Batch No:
Date of Manufacture: