

# REVOLUTIONARY WEED CONTROL



# GUERRILLA®

## NEW GENERATION: SMASHING RESISTANCE

- » Formulated to combat hard to kill weeds.
- » Single pass Fleabane control
- » Class leading surfactant package
- » Supporting a 100% Australian owned & operated business.



**IMTRADE**  
CropScience  
Agriculture Reimagined

[www.imtrade.com.au](http://www.imtrade.com.au)

# TECH NOTES

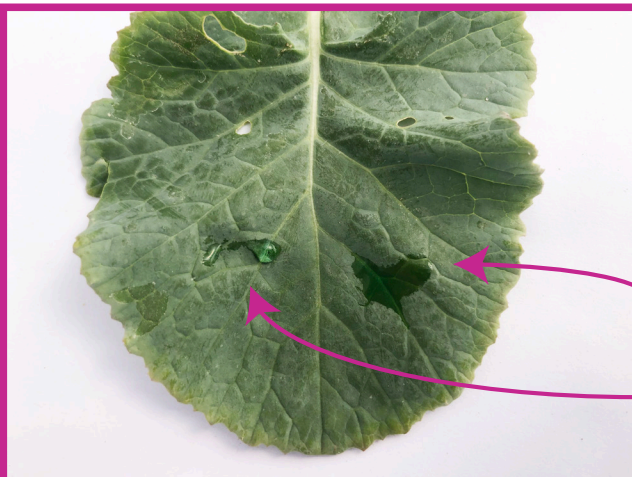


## Mode of Action

Imtrade Guerrilla® (Paraquat + Amitrole) combines both L and Q herbicidal groups into one easy to use, broad spectrum formulation for optimal burn-down control of weeds.

By combining these two actives, Guerrilla® is able to inhibit both the photosystem 1 photosynthetic pathway and carotenoid biosynthesis. By formulating these at the right concentrations, the two modes of action are complementary in their effects.

The internal plant metabolism of amitrole delays the direct action of paraquat. This promotes broader translocation of the paraquat ion within the target. In all, this causes slightly delayed symptom developments but results in more complete weed control, reducing regrowth and allowing greater freedom of use (no need to constrain your paraquat treatments to the end of the day or overcast periods).



## Knockdown Weed Control

Guerrilla® has been developed as a second generation product for combating resistant weeds. Providing the benefit of rapid burndown control, but unlike other paraquat-based formulations, significantly reduces restrike post burndown. Guerrilla® is:

- » Rainfast in 15 minutes.
- » Safe to following crops 1 hour after application.
- » Effective on pre-1 leaf seedlings.
- » On average a 25% improvement in control compared to equivalent paraquat applications.
- » Formulated with a class-leading surfactant package providing superior droplet retention and coverage of foliage.
- » Not reliant on additional adjuvants.

## Fleabane Control

Guerrilla® is registered as a stand alone application for control of Fleabane in fallow, orchards, vineyards and non-cropping areas.

- » Single pass Fleabane control up to initiation of branching at 1.7 to 2.0 L/ha.
- » Can be used as the second pass in a double knock strategy at 1.7 L/ha.
- » When targeting Fleabane water rates over 80 L/ha are recommended.

## 10 MINUTES ON CANOLA LEAF

Imtrade Guerrilla® has dispersed on the leaf (right) for maximum penetration into the weed.

Gramoxone® remains a droplet (left) with less penetration than Guerrilla®.